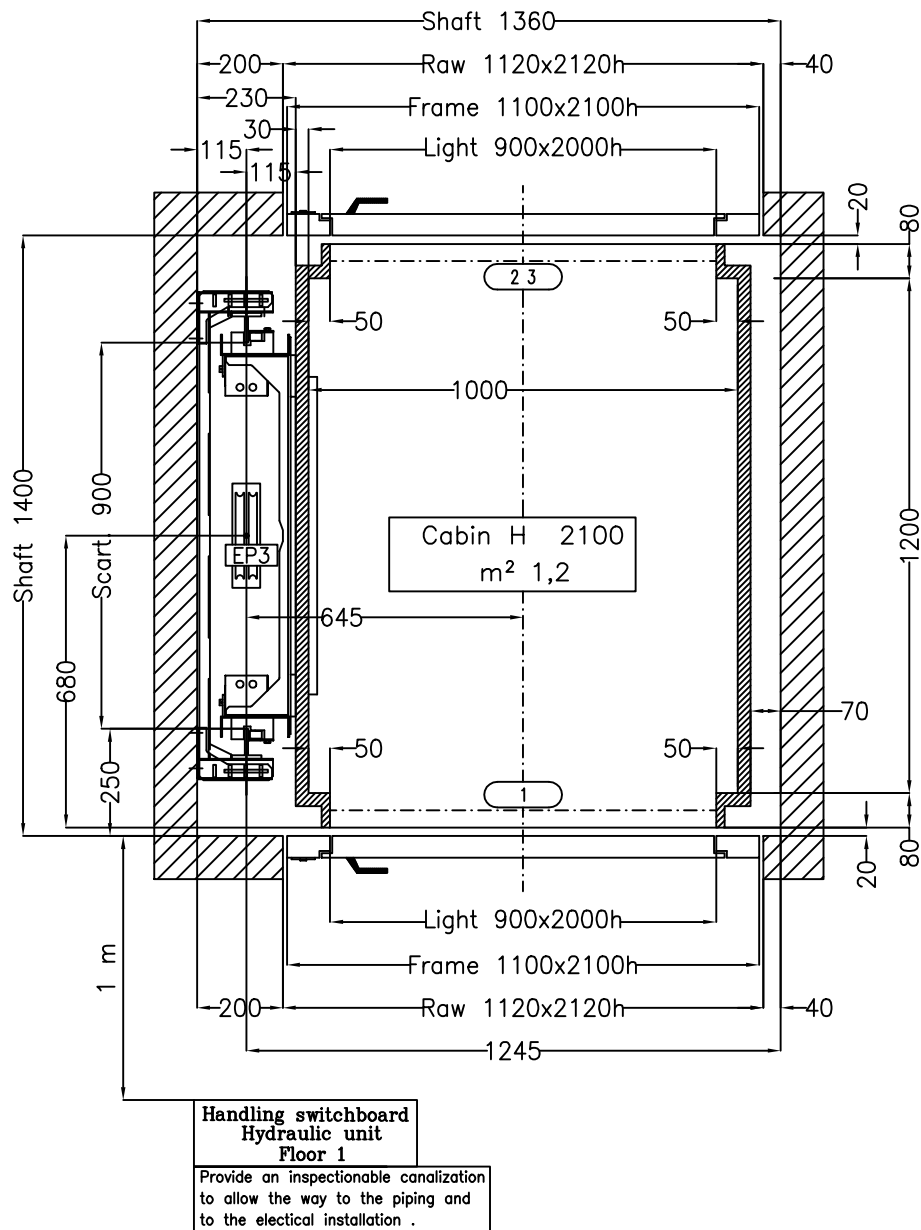
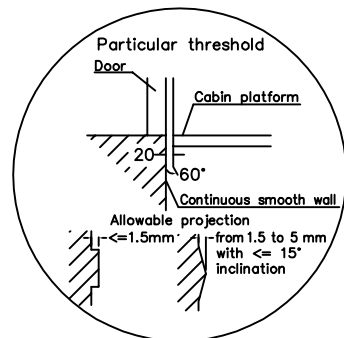


NOT STANDARD

Tubular handles model Legolift
Prepared for full infra.red curtains

FUORI STANDARD

Maniglie tubolari modello legolift
predisposizione fotocellule tutta parete



Shaft: Masonry - Muratura

Disegno Definitivo

SHEET DIMENSION

A3

DATE OF

MODIFICATIONS

Stops: 2

Doors: 2

Modifications

e .
d .
c .
b .

Check that the characteristics given in the technical drawing are in accordance with the order form

HOISTWAY

NOTES FOR THE CLIENT

- Load bearing structures of the hoistway must be able to sustain the loads indicated. The dimensions of the elevator shaft must be guaranteed with allowances of ± 1 cm. and the walls must be perfectly plumbed
- We suggest making ventilation ducts with surfaces of at least 1% of the horizontal section of the hoistway.
- The pit must be protected against water leaks.

SPEED 0.25 m/s

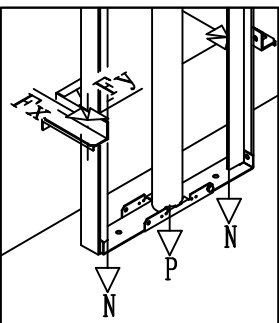
CAPACITY 350 Kg

Preliminary drawing
Dario Ogliastro

Date of first draft
08/06/2005

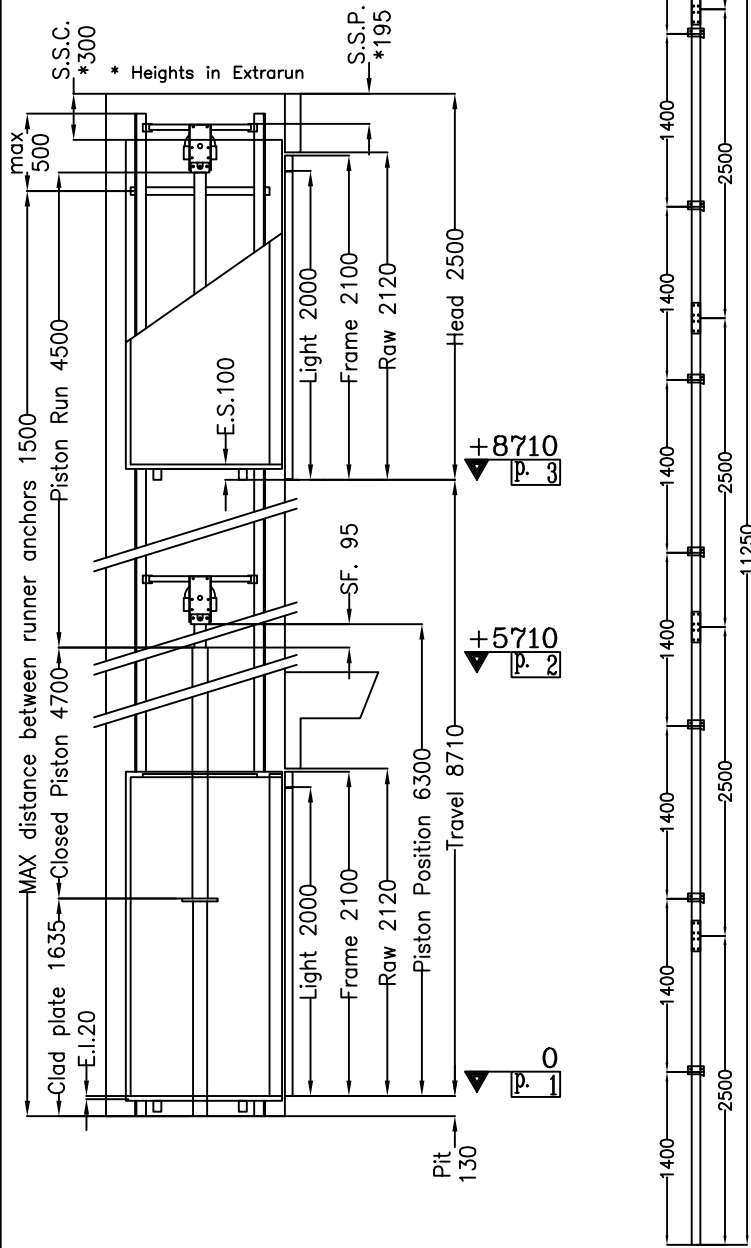
Scale 1/12.5

Sheet 1/2



Accessori:
 Chiave abilitazione pulsantiera di cabina
 predis. fotocellula/e tutta parete
 Canalina per cont. Cavi
 Barre guide da 2,5 m
 Impianto con pressostato
 Portata >300 kg
 Pompa a mano
 Arcata rinforzata - Mensola tipo UK
 Manovra Automatica
 Velocità Nominale 0,25 m/s

THE LIFT HAS VALUE ONLY FOR THE VERTICAL HEIGHTS SHOWN



Indirect Installation	Ver. 31.05.05
Thrust during normal operation	16.06.05 - 08:5
P	(N) 10129
N	(N) 1003
Fx	(N) 1159
Fy	(N) 360
Thrust of safety device intervention	
P	(N) 935
N	(N) 6740
Fx	(N) 2166
Fy	(N) 0
Pressures	
max static pressure	(bar) 25,01
min static pressure	(bar) 11,35
overpressure limit	(bar) 35,01
residual pressure	(bar) 1,86
Spaces	
extrarun below cabin E.I.	(mm) 20
extrarun above cabin E.S.	(mm) 100
piston extraction SF.	(mm) 95
piston/head S.S.P.	(mm) 195
cabin/head S.S.C.	(mm) 300
Hydraulic unit	
piston MORIS 9130	
diam. (mm)	80x7,5
total piston run (mm)	4500
closed piston (mm)	4700
opt. oil position	basso
central unit MORIS CP1	
capacity (l/min)	35
motor (V)	220
power (Hp)	3,5
tubing ø1"1/4 R2 AT FD+F90° M45X2	
length (mm)	5000
hydraulic oil	
min. litres (L)	85
Mechanical parts	
runners T70/2A	
length (mm)	11250
brackets (qt.)	8
cables 9 mm (S 114+1)	
length (mm)	13700
Minimum actual breaking load (mm)	40100
zinc clad plate 88.9	
length (mm)	1635
arcade AEP3 scart.900 mens.131 mont.2100 cil. 80	
Pilot Cable (mm)	18000
Cabin	
panels N1 Grigio	
finishes N4 Antracite	
floor Gomma nera a bolli	
operator panel N4 Antracite 900 mm	
Lobby doors: <input type="checkbox"/> All	rust-proof smooth flat TIEFFE Verniciatura liscia Maniglie in tubolare modello Legolift

Check that the characteristics given in the technical drawing are in accordance with the order form

Disegno Definitivo	VIEW	Disegno Definitivo	DATE OF MODIFICATIONS
		Dario Ogliastro	
Modifications			
d	.		.
c	.		.
b	.		.
a	.		.

Accessories
 Activation Key for Cabin Button Panel
 predis. Full Height Infra-red Curtain/s
 Box containing cables in shaft
 Guides bars dimension 2,5 m
 Installation with Pressostat
 Capacity >300 Kg
 Hand Pump
 Reinforced Arcade - Bracket type UK
 Automatic Control
 Velocità Nominale 0,25 m/s

±T

CAPACITY: 350 Kg

Security Devices	
Safety Gear	TUV AFV515
Manufacturer:	PFB - BP1
Block Valve	IMQ 10222
Manufacturer:	MORIS - 0825/P
Key Locks IMQ 10110	-
Manufact.: Tieffe-Tieffe 2000	-