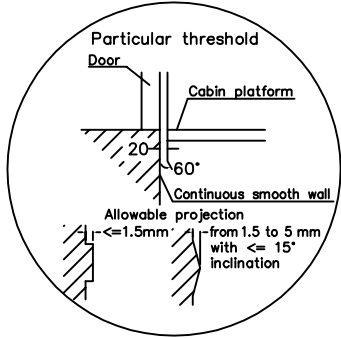
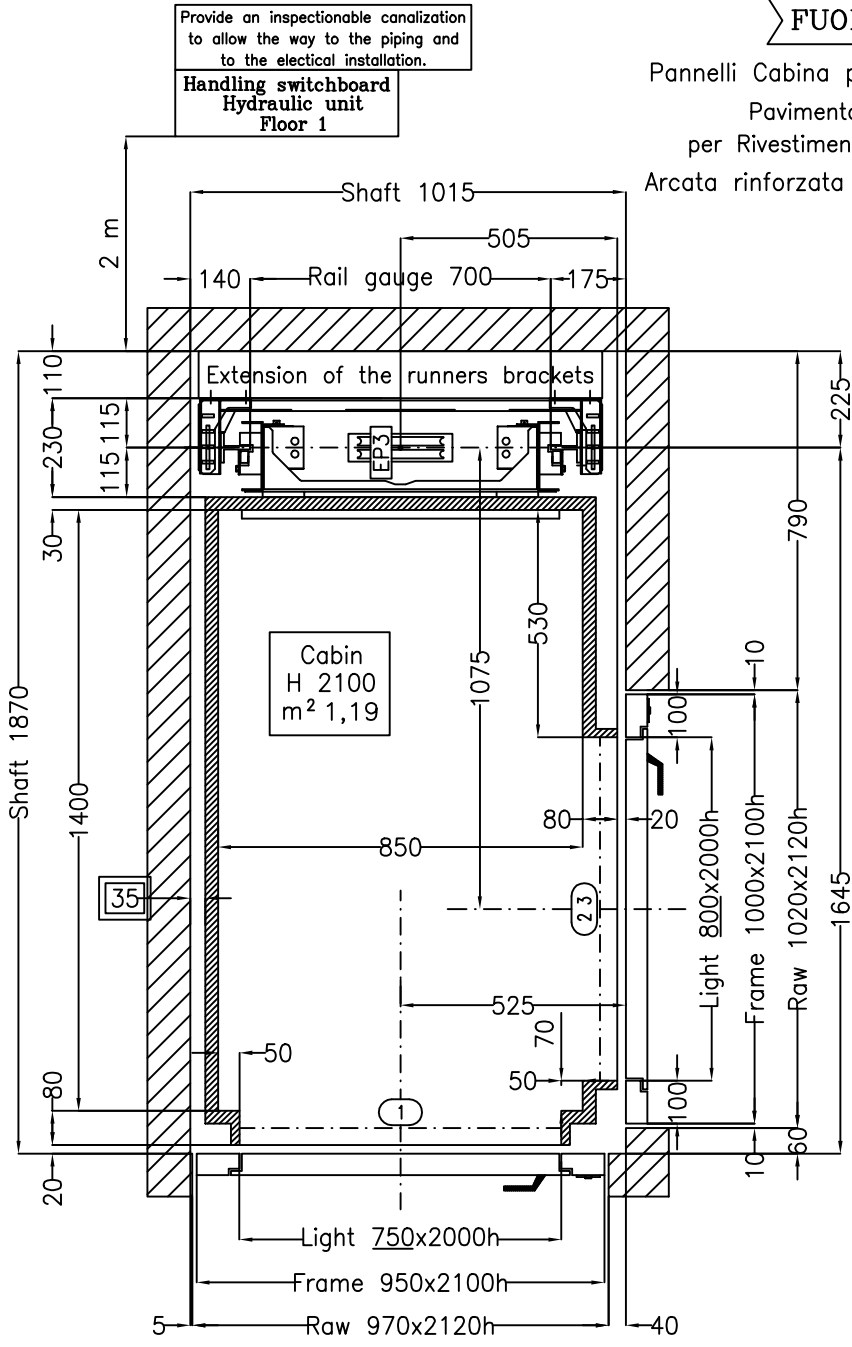


NOT STANDARD

Cabin sidewalls prepared for covering
 Floor Cabin Prepared for
 Customer Covering th. Max 15 mm 50 kg
 Reinforced Arcade – Special Bracket type UK

FUORI STANDARD

Pannelli Cabina predisposti per rivestimento
 Pavimento Cabina predisposto
 per Rivestimento Max sp 15 mm 50 kg
 Arcata rinforzata – Mensola Speciale tipo UK



Shaft: Masonry – Muratura

Disegno Definitivo

SHEET DIMENSION A3

DATE OF MODIFICATIONS

Stops: 3

Doors: 3

Modifications	d .	
c .		
b	tutte rif. Inox S.B. , posizione porta lato 2	06/10/2005
a	modifiche varie	26.09.2005

Check that the characteristics given in the technical drawing are in accordance with the order form

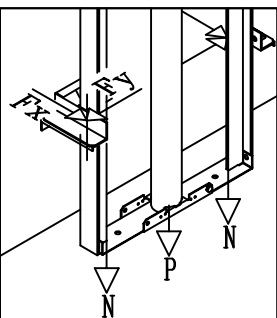
MODEL	ELFO AEP3 Indirect	SPEED	0.25 m/s	Preliminary drawing	Luca Del Bianco
Order	16086	CAPACITY	300 kg	Date of first draft	05.09.05

HOISTWAY NOTES FOR THE CLIENT

- Load bearing structures of the hoistway must be able to sustain the loads indicated. The dimensions of the elevator shaft must be guaranteed with allowances of ± 1 cm. and the walls must be perfectly plumbed
- We suggest making ventilation ducts with surfaces of at least 1% of the horizontal section of the hoistway.
- The pit must be protected against water leaks.

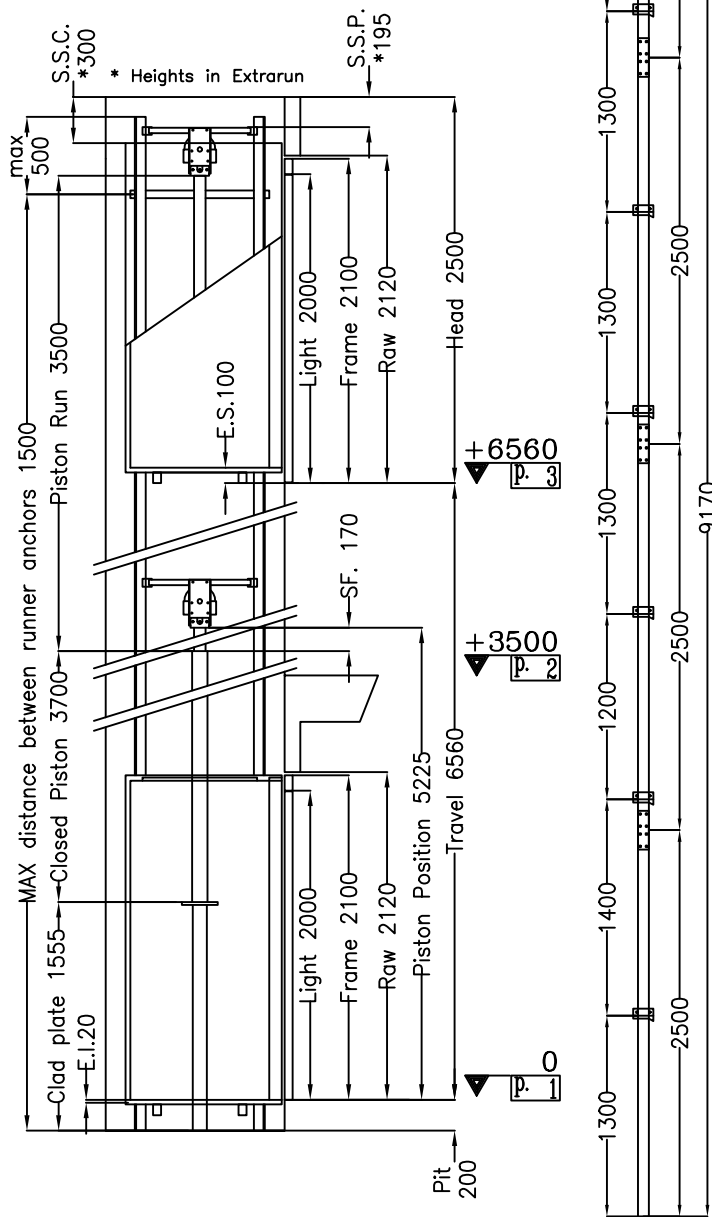
Scale	1/12.5	Sheet	1/2
-------	--------	-------	-----





Accessori:
 Chiave abilitazione pulsantiera di cabina a doppia estrazione
 Predisposizione Fotocellula/e tutta parete
 Impianto con prolunghe staffe guide
 Pulsanti Quadrati Serie B7
 Canalina per cont. Cavi
 Barre guide da 2,5 m
 Impianto con pressostato
 Pompa a mano
 Manovra Automatica
 Velocità Nominale 0,25 m/s

THE LIFT HAS VALUE ONLY FOR THE VERTICAL HEIGHTS SHOWN



Indirect Installation	Ver. 31.05.05
Thrust during normal operation	06.10.05 - 10:02
P	(N) 9082
N	(N) 817
Fx	(N) 1407
Fy	(N) 218
Thrust of safety device intervention	
P	(N) 804
N	(N) 6000
Fx	(N) 2630
Fy	(N) 0
Pressures	
max static pressure	(bar) 22,49
min static pressure	(bar) 10,78
overpressure limit	(bar) 31,49
residual pressure	(bar) 1,60
Spaces	
extrarun below cabin E.I.	(mm) 20
extrarun above cabin E.S.	(mm) 100
piston extraction SF.	(mm) 170
piston/head S.S.P.	(mm) 195
cabin/head S.S.C.	(mm) 300
Hydraulic unit	
piston	MORIS 9130
diam. (mm)	80x7,5
total piston run (mm)	3500
closed piston (mm)	3700
opt. oil position	basso
central unit	MORIS CP1
capacity (l/min)	35
motor (V)	220
power (Hp)	3,5
tubing	ø1"1/4 R2 AT FD+F90° M45X2
length (mm)	7000
hydraulic oil	
min. litres (L)	78
Mechanical parts	
runners	T70/2A
length (mm)	9170
brackets (qt.)	7
cables 9 mm (S 114+1)	
length (mm)	11600
Minimum actual breaking load (mm)	40100
zinc clad plate 88.9	
length (mm)	1555
arcade	AEP3 scart.700 mens.131 mont.2100 cil. 80
Pilot Cable (mm)	18000
Cabin	panels da rivestire a carico cliente finishes Inox Scotch Brite floor Predisp. rivest. Cliente sp. 15 mm operator panel Inox Scotch Brite 550 mm
Lobby doors:	<input checked="" type="checkbox"/> All Rust-proof smooth flat TIEFFE Tubular handles model CASPIM Prepared for Covering Verniciatura liscia-Da rivestire-Maniglie CASPIM

Check that the characteristics given in the technical drawing are in accordance with the order form

Disegno Definitivo		VIEW	Preliminary drawing Luca Del Bianco	DATE OF MODIFICATIONS
Modifications	d	.	.	.
	c	.	.	.
	b	.	.	.
	a	.	26.09.2005	.

DATE 05.09.05	SHEET 2/2	CAPACITY: 300 kg	Security Devices
OPDFP NUMPFP			Safety Gear TUV AFV515 Manufacturer: PFB - BP1
			Block Valve IMQ 10222 Manufacturer: MORIS - 0825/P
			Key Locks IMQ 10110 Manufact.: Tieffe-Tieffe 2000

Accessories:
 Activation Key for Cabin Button Panel with Double Insertion
 Preparation for full height infrared curtain
 Installation with extension of the runners brackets
 Square Buttons Series B7
 Box containing cables in shaft
 Guides bars dimension 2,5 m
 Installation with Pressostat
 Hand Pump
 Automatic Control
 Speed 0,25 m/s

