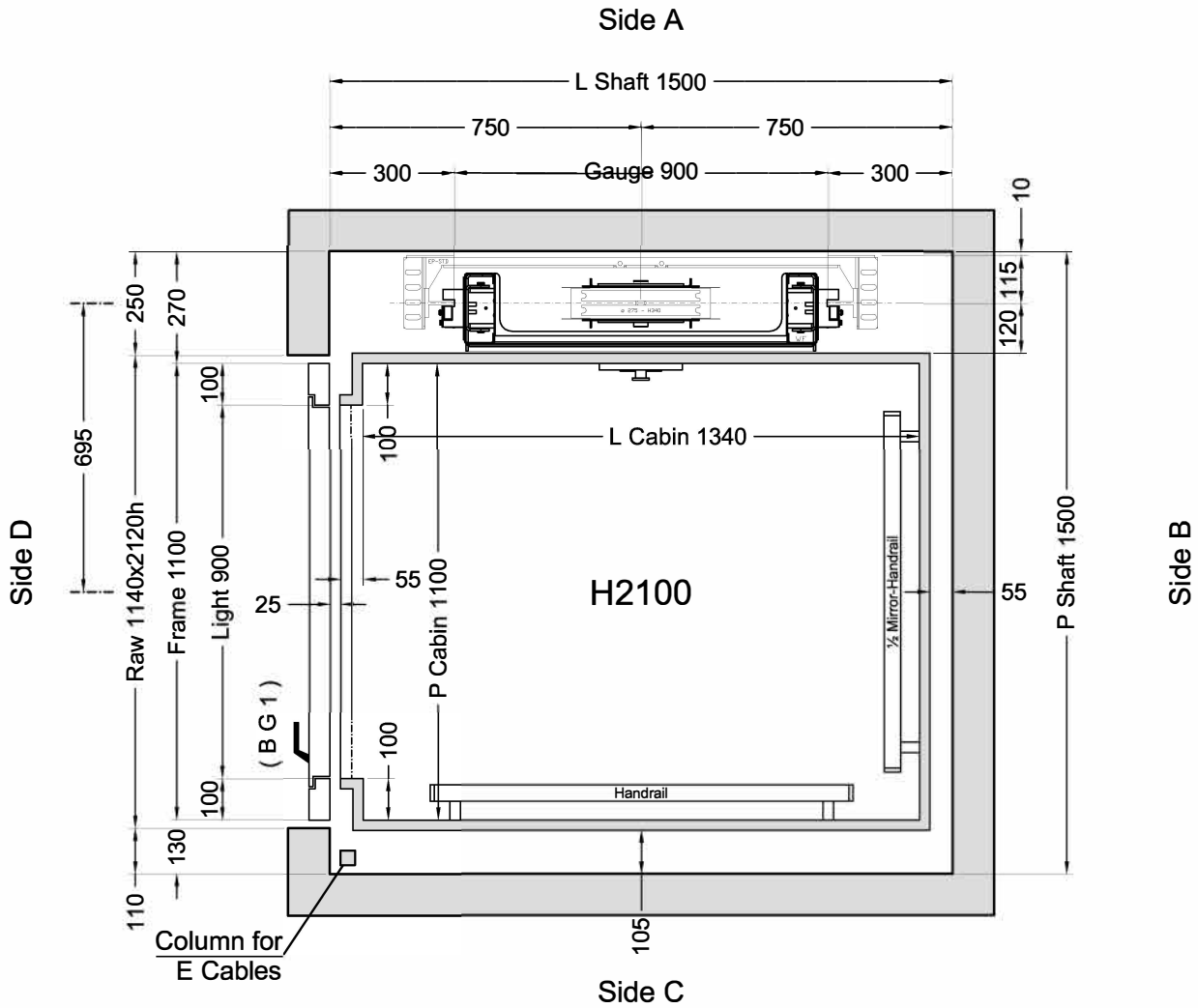


FLOOR DOOR

Side B	Side C	Side D	VERSION	H LIGHT	H FRAME	FRAME	WINDOW	GLASS	ACCESSORIES
		B G 1	*	2000	2100	*	Panoramic	Etched Neutral	<u>Door open latch</u>

C1 = Enabling key for the floor button pad (single insertion) C2 = Enabling key for the floor button pad (double insertion) PM = Button pad on the wall PE = Outside lock and button pad

* Anodized Alluminium RAL 9005 Semi-polished, smooth



Cabina
Classica

Customer own flooring: Dimensions **1365** (L) x **1100** (P) thks **20** mm Weight: **50** kg

Stops: 3 - Doors: 3

Shaft in **Reinforced concrete (Cemento armato)**

ORDER	VERSIONS	Description	Designer	Date	Final Drawings	
ORDER NUMBER	modifiche varie				Model	SHEET
					ELFO	1/2
			D.Ogliastro	05/10/2016		SHEET DIMENS.
			Final Drawings D.Ogliastro	1° STESURA 20/10/16		A3
	CLIENT	Lift Shop	CAPACITY	AREA m²	CAPACITY	
	PLACE OF INSTALLATION	1	300 Kg	1,48		

Indirect Installation Speed **0,3 m/s** 20/10/16 12.34 (V.2930) ^{EN}

THRUST DURING NORMAL OPERATION			THRUST OF SAFETY DEVICE INTERVENT.		
P	(N)	12507	P	(N)	648
N	(N)	830	N	(N)	8520
F1	(N)	1758	F1	(N)	2930
F2	(N)	382	F2	(N)	637

SPACES		PRESSURES	
E.I.	Extrarun below cabin (mm)	Max static pressure	(bar) 38,36
E.S.	Extrarun above cabin (mm)	Min static pressure	(bar) 23,07
SF.	Piston extraction (mm)	Overpressure limit	(bar) 53,71
S.S.P.	Piston/head (mm)	Residual pressure	(bar) 1,68
S.S.C.	Cabin/head (mm)		

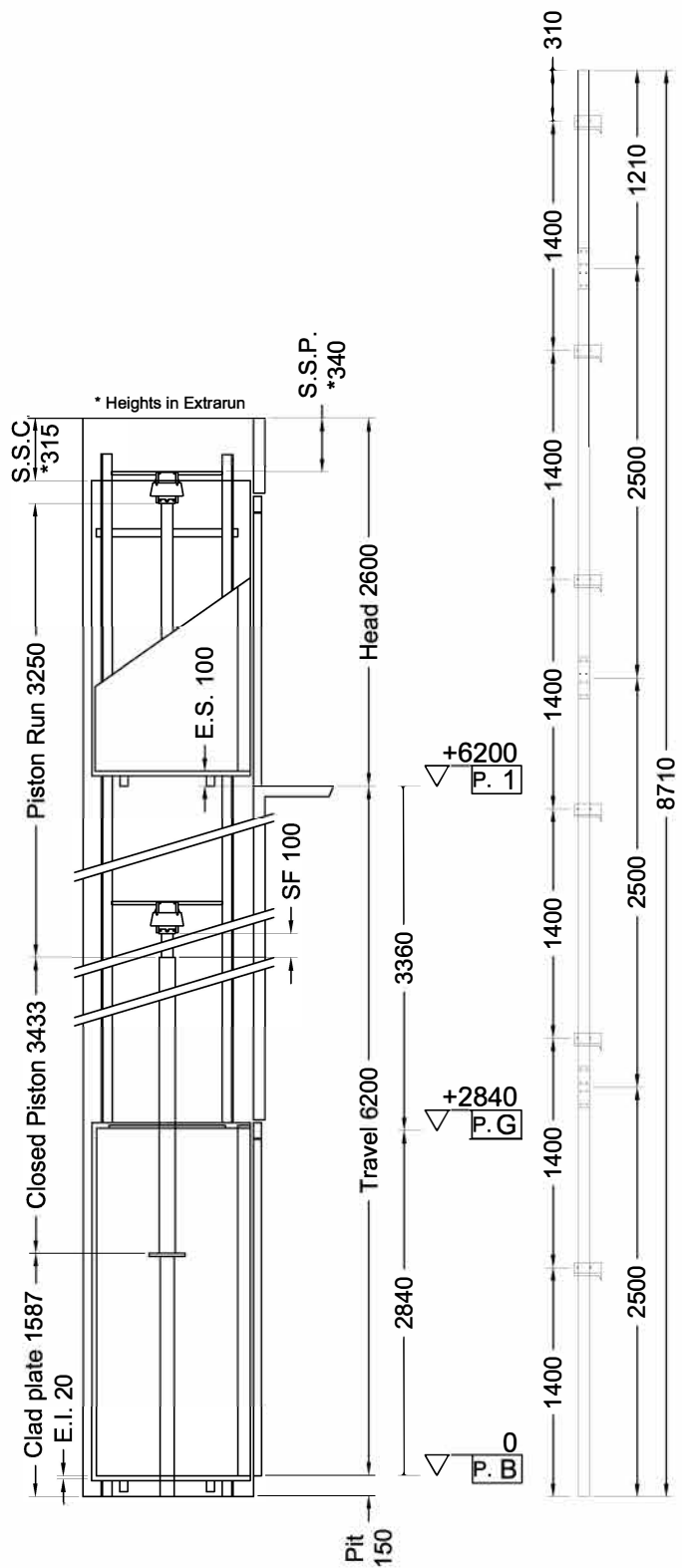
HYDRAULIC UNIT		MECHANICAL PARTS	
Central unit	GMV HL 3010 (-*)	Guide rails	70x70x9
Capacity (l/min)	35	Brackets	(Nr) 6
Motor (V)	MF230V	Ropes	\varnothing 11 mm 6-(1+9+9)
Power (Kw)	2,9	Cables length (mm) 2 x	12000
Nominal current (A)	27	Min actual breaking load (N)	70700
Piston	OMARLIFT HC (\varnothing)70x5x3250		
Opt. oil position	BASSO		
Tubing	3/4" EN 853 1SN - FD 3/4" - FD M30X2		
Tubing length (mm)	8000		
Min hydraulic oil (L)	48		

SECURITY DEVICES	Manufacturer	Model	Certificate
Safety Gear	PFB	BP1	TÜV AFV515
Block Valve	OMARLIFT	HC-34	TÜV 44 208 07 352266 004
Key Locks	Prudhomme	PLT/L/CPX NL 11-400-1002-125-02	

MACHINERY LOCATION			
At floor	B	Length of the hose travel	3000 (mm)
Cables enter in shaft: Side	B		

CABIN		CABIN ACCESSORIES	
Panels	Antracite N4	½ Mirror	Lati B
Finishes	F41PPS	Handrail	INOX S.B., Lati B,C
Oper. panel	VERTICAL	Outside covering	Roof
Floor	By Customer	Outside finishing	F41PPS
Ceiling	SPOTS LED - F41PPS		

OTHER ACCESSORIES
Automatic Control 2011
Two speed
Handles CASPIM (Long)
Telephone by Lift Shop
Full height infra-red curtain V2
Auditory signal to indicate the lift arrival
Roof covering
Call Accept Emergency manual descent from cabin
Enabling key for the cabin button pad, double insertion
Guides dimension 2.5 m
Blue buttons



ORDER
ORDER NUMBER

CLIENT
Lift Shop
PLACE OF INSTALLATION

Final Drawings
D.Ogliastro
1° STESURA
20/10/16
Final Drawings
SCALE
OUT OF SCALE
SHEET
2/2