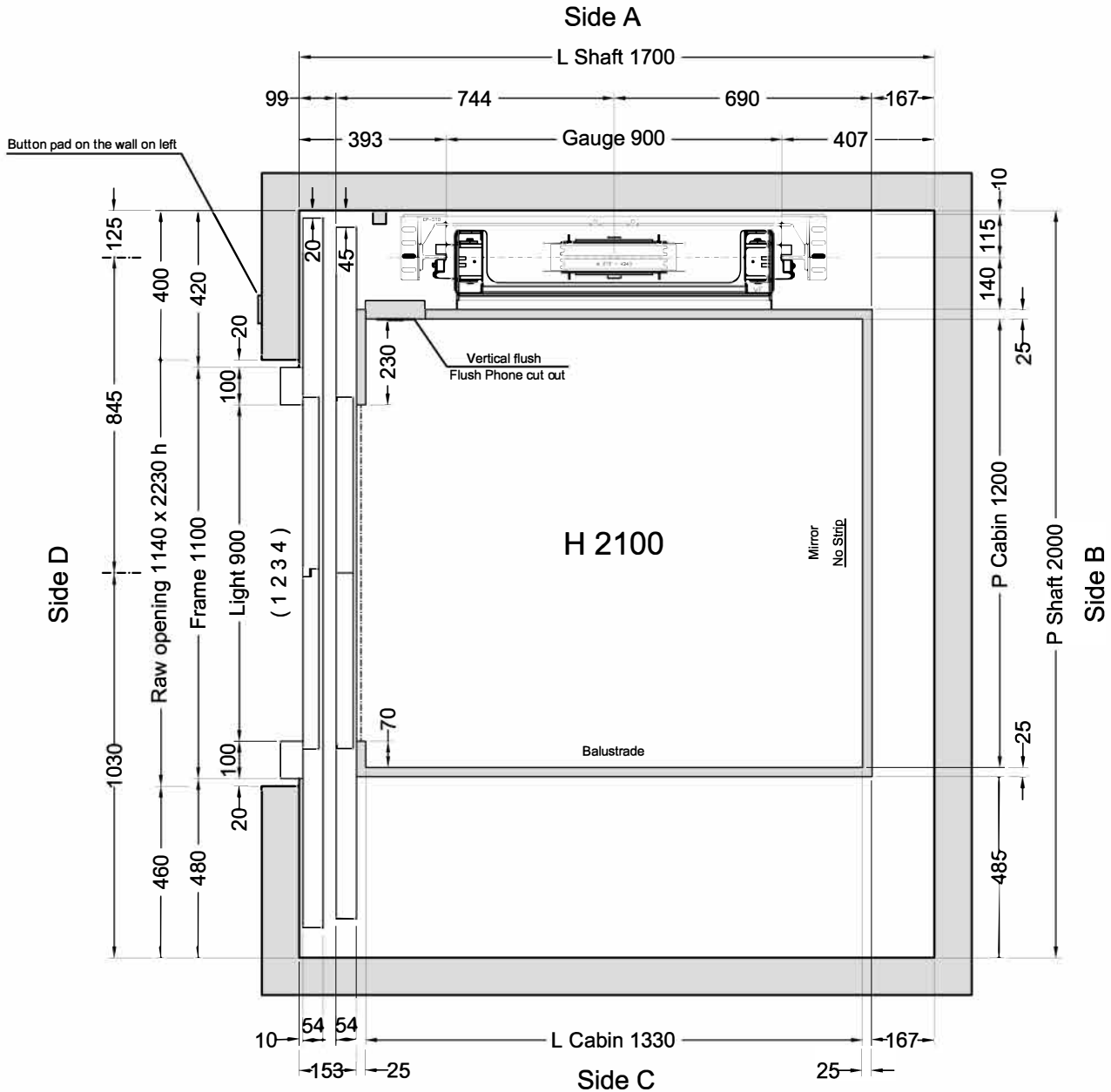


FLOOR DOOR

Side B	Side C	Side D	VERSION	H LIGHT	H FRAME	FRAME	WINDOW	GLASS	ACCESSORIES
		1 2 3 4	2 Panels RAL 9003 Matt Smooth	2000	2210	RAL 9003 Matt Smooth	Absent		PM - <u>Icaro Display</u>

C1 = Enabling key for the floor button pad (single insertion) C2 = Enabling key for the floor button pad (double insertion) PM = Button pad on the wall PE = Outside lock and button pad



Cabina Classica

□ Column for E Cables

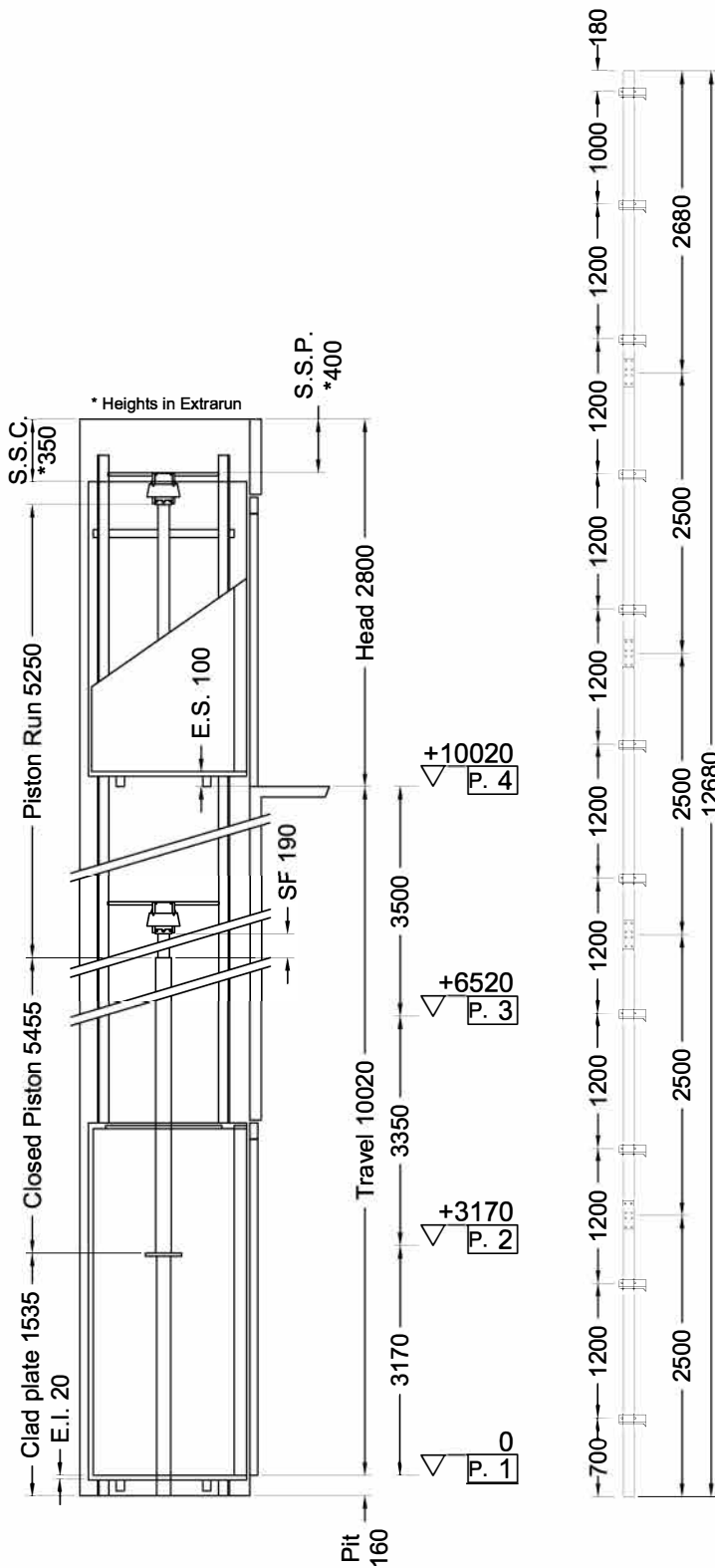
Feasibility n° 2787 - Balustrade - Black Buttons

Stops: 4 - Doors: 4

Shaft in **Reinforced concrete (C.A.)**

Customer own flooring: Dimensions **1355 (L) x 1200 (P)** thks **20 mm** Weight: **50 kg**

ORDER	VERSIONS	Description	Designer	Date	Final Drawings	
ORDER NUMBER					Model ELFO 2	SHEET 1/2
		spallette di piano; finitura flush modifiche varie	D. Tomei	08/02/2017		SHEET DIMENS. A3
			D. Ogliaastro	06/02/2017		SCALE 1:12.5
			Final Drawings Dario O. L. Del Bianco	1° STESURA 22/02/17		
			CAPACITY 350 kg	AREA m² 1,6	CAPACITY	



Indirect Installation	Speed 0,30 m/s	22/02/17 17.17	(V.2952)
THRUST DURING NORMAL OPERATION		THRUST OF SAFETY DEVICE INTERVENT.	
P	(N) 14878	P	(N) 869
N	(N) 1208	N	(N) 10258
F1	(N) 1969	F1	(N) 3282
F2	(N) 367	F2	(N) 612
SPACES		PRESSURES	
E.I.	Extrarun below cabin (mm) 20	Max static pressure	(bar) 36,24
E.S.	Extrarun above cabin (mm) 100	Min static pressure	(bar) 22,58
SF.	Piston extraction (mm) 190	Overpressure limit	(bar) 50,74
S.S.P.	Piston/head (mm) 400	Residual pressure	(bar) 1,73
S.S.C.	Cabin/head (mm) 350		
HYDRAULIC UNIT		MECHANICAL PARTS	
Central unit	GMV HL 3010 (-*)	Guide rails	70x70x9
Capacity (l/min)	43	Brackets	(Nr) 11
Motor (V)	TF400V	Ropes	\varnothing 11 mm 6-(1+9+9)
Power (Kw)	3,4	Cables length (mm) 2 x	16000
Nominal current (A)	14	Min actual breaking load (N)	70700
Piston	OMARLIFT CS (\varnothing) 80x5x5250		
Opt. oil position	BASSO		
Tubing	3/4" EN 853 1SN - FD 3/4" - FD M30X2		
Tubing length (mm)	8000		
Min hydraulic oil (L)	68		
SECURITY DEVICES	Manufacturer	Model	Certificate
Safety Gear	PFB	BP1	TÜV AFV515
Block Valve	OMARLIFT	HC-34	TÜV 44 208 07 352266 004
Key Locks	FERMATOR	210/10/40	
MACHINERY LOCATION			
At floor	1	Length of the hose travel	2000 (mm)
Cables enter in shaft: Side	C		
CABIN	CABIN ACCESSORIES		
Panels	Arpa 0509 LUN	Mirror	<u>no strip</u> Side B
Finishes	RAL 9004 - Matt Smooth		
Oper. panel	Vertical - Flush mounted - Corner A/D - RAL 9004 - Matt Smooth		
Floor	By Customer		
Ceiling	CLOSED - RAL 9004 - Matt Smooth		
Cabin Doors	Side D: 2-Panels Automatic Sliding doors, RAL 9004 - Matt Smooth		
OTHER ACCESSORIES			
Automatic Control 2011			
Two speed			
Return to the lower floor after adjustable time			
Cabinet: Antracite N4			
Full height infra-red curtain V2			
Power supply 400V 3 phase			
Blue Buttons - Venus Black Buttons (Ft. 2787)			
ICARO display in cabin on COP			
Call Accept + Emergency manual descent from cabin			
Telephone by Lift Shop - Cut out for flush phone 86 mm x 175 mm on COP			
Door Open Button on C.O.P.			
Enabling key for the cabin button pad, double insertion			
Guides dimension 2.5 m			
Piston in 2 pieces			
Balustrade (Ft. 2787)			



ORDER	CLIENT
ORDER NUMBER	

Final Drawings	L. Del Bianco	1° STESURA	22/02/17
Final Drawings			
SCALE	OUT OF SCALE	SHEET	2/2