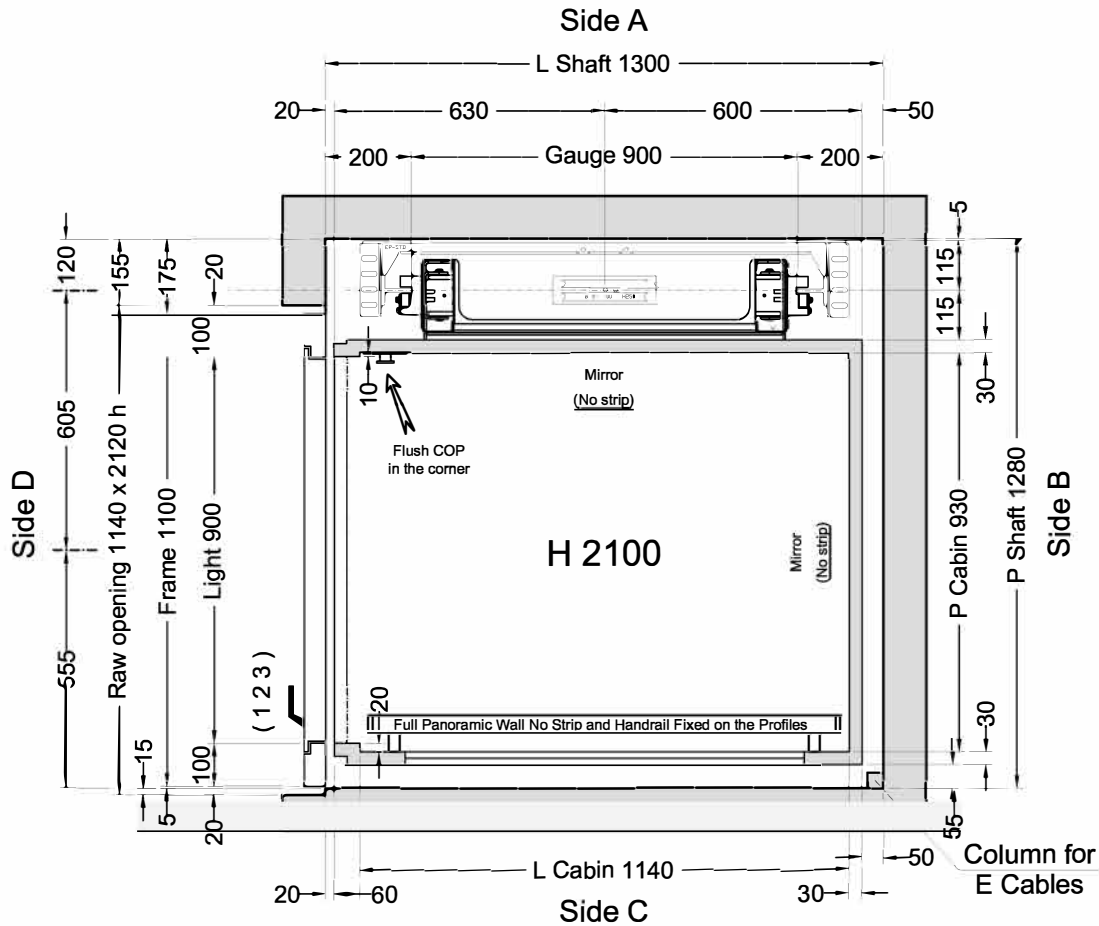


FLOOR DOOR

Side B	Side C	Side D	VERSION *	H LIGHT	H FRAME	FRAME	WINDOW	GLASS	ACCESSORIES
		1 2 3	Anod. Al. Cov. <u>ready for painting</u>	2000	2100	Anod. aluminium Cov. <u>ready for painting</u>	Panoramic	Transparent	C2

C1 = Enabling key for the floor button pad (single insertion) C2 = Enabling key for the floor button pad (double insertion) PM = Button pad on the wall PE = Outside lock and button pad

(*) No Holes for Handles



Feasibility n° 2339 - Panoramic no strip & Handrail

Stops: 3 - Doors: 3

Shaft in **Masonry (Muratura)**

Customer own flooring: Dimensions 1170 (L) x 930 (P) thks 20 mm Weight: 50 kg

ORDER	VERSIONS	Description	Designer	Date	Final Drawings	
ORDER NUMBER		Pistone e Meccanica RAL 9004.	L. Del Bianco	06/07/2015	Model	SHEET
		specchio senza rompitratto lato A e vertical flush cop side AD	D.Ogliastro	16/06/2015	ELFO	1/2
		corsa (7000); lungh. tubo e lato ingresso; accessori cabina.	D.Tomei	05/06/2015		SHEET DIMENS.
						A3
	CLIENT	Lift Shop	Final Drawings	1° STESURA		SCALE
	PLACE OF INSTALLATION		L. Del Bianco	08/07/15		1:12.5
			CAPACITY	AREA m²	CAPACITY	
			300 kg	1,07		

THRUST DURING NORMAL OPERATION			THRUST OF SAFETY DEVICE INTERVENT.		
P	(N)	11270	P	(N)	638
N	(N)	960	N	(N)	7835
F1	(N)	1309	F1	(N)	2182
F2	(N)	256	F2	(N)	427

SPACES		PRESSURES		
E.I.	Extrarun below cabin (mm)	20	Max static pressure (bar)	37,71
E.S.	Extrarun above cabin (mm)	100	Min static pressure (bar)	22,42
SF.	Piston extraction (mm)	75	Overpressure limit (bar)	52,8
S.S.P.	Piston/head (mm)	440	Residual pressure (bar)	1,66
S.S.C.	Cabin/head (mm)	425		

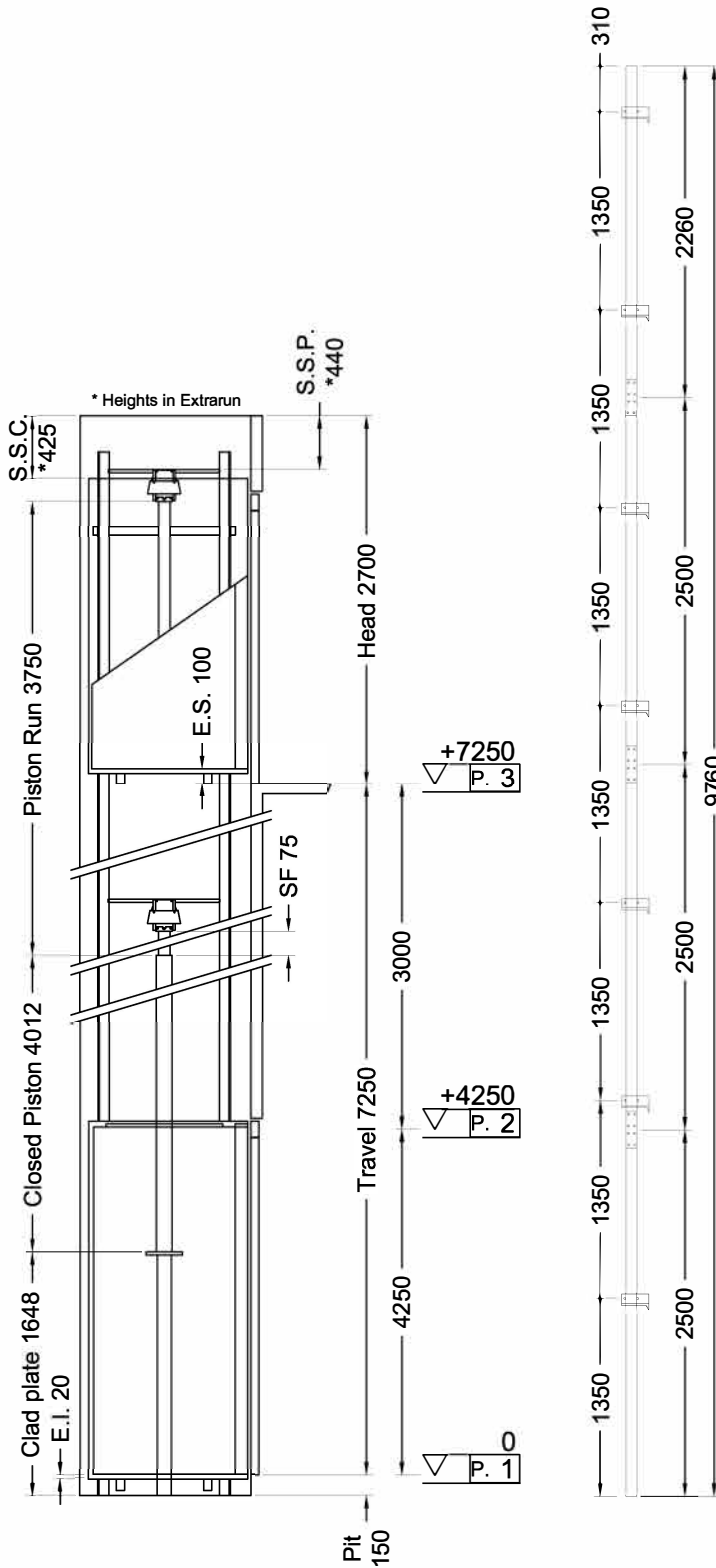
HYDRAULIC UNIT		MECHANICAL PARTS	
Central unit	GMV HL 3010 (-*)		
Capacity (l/min)	35	Guide rails	70x70x9
Motor (V)	MF230V	Brackets	(Nr) 7
Power (Kw)	2,9	Ropes	Ø 9 mm 6-(1+9+9)
Nominal current (A)	27	Cables length (mm) 2 x	13000
Piston	Start Home (ø)70x5x3750	Min actual breaking load (N)	47300
Opt. oil position	BASSO		
Tubing	3/4" EN 853 1SN - FD 3/4" - GOMITO 3/4"		
Tubing length (mm)	7000		
Min hydraulic oil (L)	49		

SECURITY DEVICES	Manufacturer	Model	Certificate
Safety Gear	PFB	BP1	TÜV AFV515
Block Valve	START ELEVATOR	1/2" 0327	CA50.00525
Key Locks	Prudhomme	PLT/L/CPX NL 11-400-1002-125-02	

MACHINERY LOCATION			
At floor	1	Length of the hose travel	2000 (mm)
Cables enter in shaft: Side	C		

CABIN		CABIN ACCESSORIES	
Panels	Galvanized sheet	Mirror	Side A, B (No strip)
Finishes	Inox Scotch Brite	Panoramic	Side C (No strip)
Oper. panel	Vertical Flush mounted **	Handrail	Inox S.B., Side C §
Floor	By Customer	Outside covering	Side C, Roof
Ceiling ***	Closed-Spots Led - Bianco A1	Outside finishing	Inox Scotch Brite
(**) Corner A/D - Inox Scotch Brite		(§) Mounted on Profiles	
(***) No Cut Out			

OTHER ACCESSORIES
Enabling key for the cabin button pad, double insertion
Mechanic painted RAL 9004
Guides dimension 2.5 m
Piston painted RAL 9004
Manual pump
Manostat with overweight signal
Two speed
Handles CASPIM (Long) - Doors without holes for handles
Telephone by Lift Shop
Full height infra-red curtain V2
Roof covering
Automatic Control 2011
Blue Buttons
Call Accept
Emergency Manual descent from cabin



ORDER	CLIENT
ORDER NUMBER	PLACE OF INSTALLATION

Lift Shop

Final Drawings	1° STESURA
L. Del Bianco	08/07/15
Final Drawings	
SCALE	SHEET
OUT OF SCALE	2/2